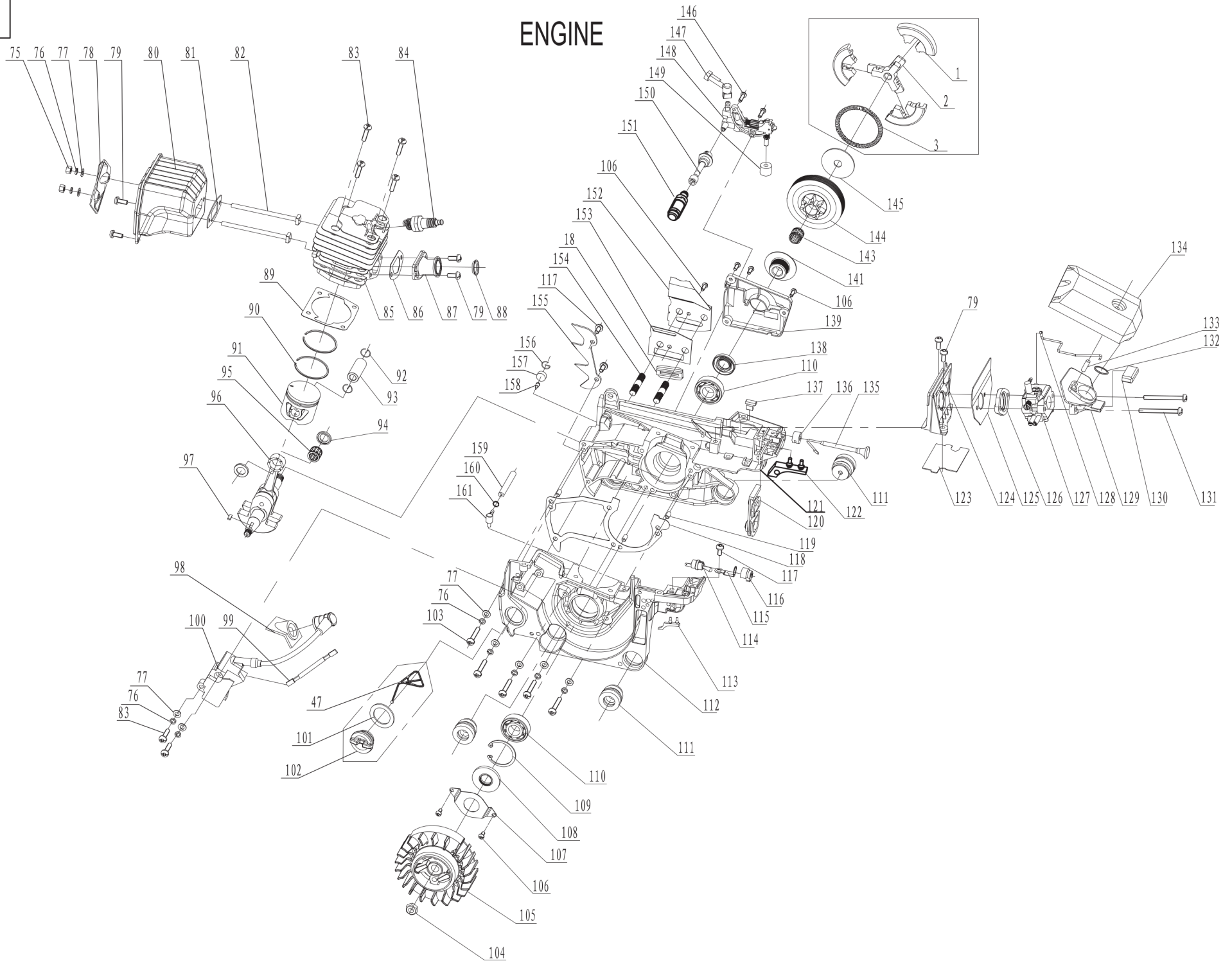


CSB45

ENGINE



CSB45 Parts List

NO.	ERP Code	Chinese Description	English Description	QTY
1	1004.33502	蹄块	shoe block	3
2	1004.33501	保持架	retainer	1
3	1004.33405	离合器拉簧	clutch extension spring	1
4	1004.33212	张紧块	tightener	1
5	1004.33211	张紧螺钉	tightener screw	1
6	1004.33210	张紧齿轮	tightener gear wheel	1
7	1004.34130	刹车弹簧压板	brake spring cover	1
8	322170301	十字自攻螺钉ST4.2x8-H-F	screw ST4.2*8-H-F	4
9	1004.32405	大垫圈6	washer 6	1
10	1004.34221	减震橡胶垫圈	shock absorption rubber washer	1
11	1004.32408	开口挡圈5	clip 5	1
12	1004.33410	刹车挡板扭簧	brake guard torsion rod spring	1
13	1004.33208	刹车挡板套管	front guard tube	1
14	1004.32219	十字自攻螺钉ST4.2x6-H-F	screw ST4.2*6-H-F	1
15	1004.33311	导板外夹片	guide bar outer plate	1
16	1004.34220	防尘板	dust shield	1
17	1004.33409	刹车弹簧带	brake spring belt	1
18	1004.34108	导链块	chain guide block	2
19	1004.34126	导板压紧盖	guide bar cover	1
20	1004.33309	限位板	limit board	1
21	1004.32406	开口挡圈4	clip 4	2
22	1004.33207	挡板销	barrier pin	1
23	1004.32402	开口挡圈3	clip 3	1
24	1004.34129	刹车挡板	brake guard	1
25	1004.33209	限位销	limit pin	1
26	1004.33412	刹车副弹簧	assistant brake spring	1
27	1004.33411	刹车弹簧	brake spring	1
28	1004.33308	刹车控制杆	brake control rod	1
29	1004.32601	销3x9	pin 3*9	2
30	1004.34127	副杠杆	assistant lever	1
31	1004.34128	主杠杆	main lever	1
32	1004.34134	启动器罩(叶)	starter cover	1
33	1004.34224	LH护套	LH jacket	1
34	341220101	导绳套	rope guide cover	
35	1004.34501	启动拉绳	starter rope	1
36	1004.33408	启动盘簧	starter coil spring	1
37	1004.34131	启动把手	starter handle	1
38	1004.34119	启动盘簧压板	starter coil spring cover	1
39	1004.34143	启动轮A	Starter wheel A	1
40	322190101	ST4.8x16-H-F_大头	screw ST4.8*16-H-F	9
41	1004.34222	油箱减震橡胶	oil tank shock absorption rubber	1
42	1004.34213	长减震座	long anti-vibration cushion base	2
43	1007.32203	M5x16内六角螺钉	screw M5*14	11
44	1004.34110	减震座防尘盖	shock absorption dust shield	5
45	1004.34117	燃油箱盖	fuel tank cap	1
46	1004.34217	燃油箱盖密封垫	fuel tank cap washer	1
47	1004.34102	防掉板	fuel cap retainer	2
48	1004.34135	按钮护套	button jacket	1
49	1004.33413	按钮弹簧	button spring	1
50	1004.34136	按钮轴	button axes	1
51	1004.34111	油箱	oil tank	1
52	5001.32202	ST4.8x20-H-F—自攻螺钉	screw ST5*20-H-F	2
53	1004.34113	油门开关A	thorttle trigger A	1

54	1004.34114	手柄盖	handle cover	1
55	1004.34112	油门开关B	throttle trigger B	1
56	1004.33406	复位弹簧	reset spring	1
57	1004.32602	销6x25	pin 6*25	1
58	1004.31909	平衡器	balancer	1
59	1004.34214	平衡器座	balancer block	1
60	1004.34215	燃油管	fuel pipe	1
63	319150101	汽油过滤器	fuel filter	1
64	1004.34122	导风圈	cover fan	1
65	1004.31910	前手把	front handle	1
66	1004.34208	怠速调节导套	Idle adjustment guide sleeve	1
67	1004.33407	锥形弹簧	taper spring	1
68	1004.34115	锥形弹簧座	taper spring block	1
69	1004.34116	断链器	chain safeguard	1
70	1004.34123	缸体护罩	cylinder cover	1
71	1004.34218	减震橡胶垫	shock absorption rubber washer	1
72	1004.34124	空滤器罩	air filter cover	1
73	1004.34219	锁母垫圈	nut washer	1
74	1004.34125	空滤器锁母	air filter nut	1
75	323020301	螺母M5	nut M5	2
76	324040301	平垫5	washer 5	9
77	324110301	弹垫5	spring washer 5	9
78	1004.33304	消声器盖板	muffle cover	1
79	5003.32204	M5x12内六角螺钉	screw M5*12	7
80	1004.31904	消声器组件	muffle assy	1
81	1004.34901	消声器密封垫	muffle seal washer	1
82	1004.32203	消声器螺栓	muffle bolt	2
83	322210101	M5x20内六角螺钉	screw M5*20	6
84	315010101	火花塞	spark plug	1
85	1004.33104	汽缸-45cc	cylinder	1
86	1004.34603	进气管密封垫	in pipe seal washer	1
87	1004.34204	进气管	in pipe	1
88	1004.33303	保持圈	retainer	1
89	1004.34602	汽缸密封垫	cylinder seal washer	1
90	1004.33204	活塞环-45cc	piston ring	2
91	1004.33103	活塞-45cc	piston	1
92	1004.33403	活塞销卡簧	piston pin circlip	2
93	1004.33203	活塞销	piston pin	1
94	1004.33202	滚针轴承挡圈	needle bearing clip	2
95	1004.32101	滚针轴承NA11x15x12.5	needle bearing NA11*15*12.5	1
96	1004.31901	曲轴连杆组件	crankshaft connecting rod ass'y	1
97	1004.32701	半圆键2.9x10	semicircular key 2.9*10	1
98	1004.34223	高压包护套	Ignition coil protective cover	1
99	1004.36401	熄火线	flameout wire	1
100	1004.31911	高压包组件	ignition coil	1
101	1004.34228	机油箱盖密封垫	oil cap washer	1
102	1004.34103	机油箱盖	oil cap	1
103	5003.32202	M5x30_内六角螺钉	screw M5*30	5
104	323020101	M8x1_全金属锁紧螺母	nut M8	1
105	1004.31905	飞轮	fly wheel	1
106	1004.32209	M4x8内六角螺钉	screw M4*8	6
107	1004.33302	油封压板	oil seal plate	1
108	1004.32801	油封15x35x5	oil seal 15*35*4.5	1
109	1004.32403	孔用挡圈35	circlip 35	1
110	5004.32102	轴承6202 D级	bearing 6202 grade D	2
111	1004.34212	短减震座	short shock absorption block	3

112	1004.33101	左箱体	left crankshaft case	1
113	1004.34227	左箱体减震橡胶	left shock absorption rubber	1
114	1004.36301	熄火开关	switch	1
115	1004.33305	接地片	ground strip	1
116	1004.34209	熄火开关座	switch seat	1
117	1004.32212	M5x10内六角螺钉	screw M5x12	3
118	1004.34601	箱体密封垫	crankshaft case gasket	1
119	5003.33215	销5x10	pin 5*10	3
120	1004.34203	防尘块	dust plate	1
121	1004.33102	右箱体	right crankshaft case	1
122	1004.34225	右箱体减震橡胶	right shock absorption rubber	1
123	1004.34902	进气座垫片	air intake washer	1
124	1004.34104	进气管支架	air intake tube support	1
125	1004.34605	进气管支架密封垫	air intake tube support gasket	1
126	1004.34105	进气法兰	air intake flange	1
127	1004.31401	化油器	carburetor	1
128	1004.33404	油门推杆	accelerator rod	1
129	1004.33105	进气座	air intake	1
130	1004.34205	空滤进气座减震	air intake cushion	1
131	5001.32209	内六角螺钉M5x50	screw M5x52	2
132	1004.34226	空滤器密封圈	gaskte,air filter	1
133	1004.32202	双头螺柱M5x30	screw GM5-M5*30	1
134	1004.31902	空滤器	air filter	1
135	1004.31903	风门推杆	choke rod	1
136	1004.34207	风门推杆座	choke rod seat	1
137	1004.34206	减震块	shock absorption block	1
138	1004.32802	油封15x28x5	oil seal 15*28*4.5	1
139	1004.34107	机油泵盖板	oil pump cover plate	1
141	1004.34109	蜗轮	worm	1
143	1004.32102	滚针轴承12x15x14.5	Needle bearing 12*15*14.5	1
144	1004.33205	离合器外壳	clutch shell	1
145	1004.33307	离合器调整垫圈	clutch washer	1
146	322090101	M4x16_内六角螺钉	screw M4x16	2
147	1004.34211	机油出油嘴	oil outlet nozzle	1
148	1004.31907	机油泵	oil pump	1
149	1004.34302	海绵过滤圈	sponge filter	1
150	1004.34210	机油管	oil tube	1
151	1004.31908	机油过滤器	oil filter	1
152	1004.33306	导板内夹片	guide bar inner plate	1
153	1004.34606	导板内夹片垫片	guide bar inner plate gasket	1
154	1004.32205	双头螺柱	screw	2
155	1004.33301	插木齿	spiked bumper kit	1
156	1004.33402	通气嘴卡簧	aeration nozzle circlip	1
157	1004.34301	海绵过滤块	sponge filter block	1
158	1004.34202	通气嘴	aeration nozzle	1
159	1004.34201	负压管	Vacuum tube	2
160	1004.33401	负压管卡簧	Vacuum tube circlip	1
161	1004.33201	负压嘴	Vacuum nozzle	1
162	323070101	带肩螺母M8	nut M8	2
163	1005.31601	导板16"	Oregon bar 16"	1
164	1005.31701	链条16"	Oregon Chain 16"	1
165	1005.34101	导板护套16"	Guide cover 16"	1
166	324040101	平垫5x16x1	washer 5*16*1	1
167	5001.32404	平垫4	washer 4	1
168	1004.34144	启动轮A	Starter wheel A	1
169	1004.33414	启动扭簧	starter torsion spring	1